



TURING

Turing Shield

Side-by-Side Stand & Badge Printer

Assembly Instructions

Support: +1-(877)730-8222

support@turingvideo.com

1730 South El Camino Real, Suite 350
San Mateo, California 94402

Package Content

Content :

- Turing Temperature Scanner - mounted on the stand
- Turing AI box - mounted inside the stand
- (If applicable) HID card reader - mounted on the stand
- Platform holder for badge printer
- Platform holder for sanitizer bottle
- Screws for the platform holders
- Product manual

Tools needed for assembly (not provided)

- Crosshead screwdriver Screwdriver

Assembly Video

Please click [the link](#) or scan the QR code using a smartphone camera to watch the assembly video for your Turing Shield Side-by-Side Stand.

<https://turingvideo.com/videos/>



Assembly Instructions

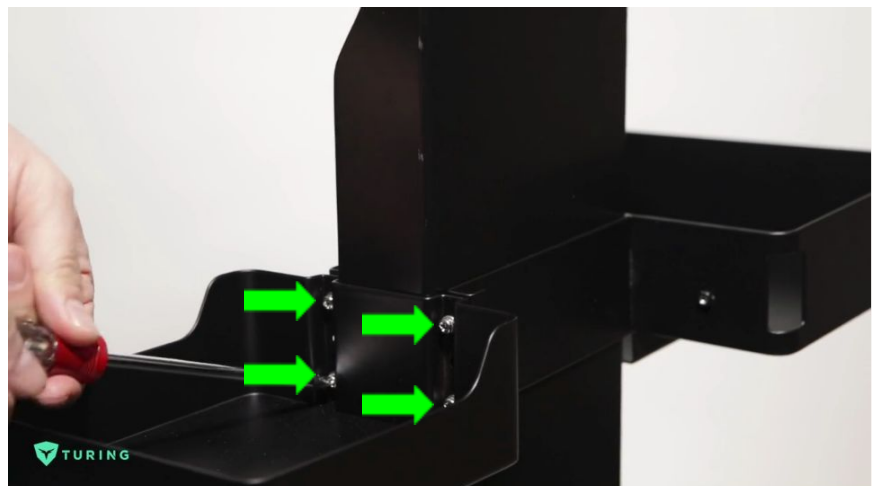
1. Locate all parts and note the front and back of the badge printer holder.



2. Slide the badge printer holder onto the right side of the stand. Adjust it to a desired height.



3. Attach the hand sanitizer holder on the left side using the provided four screws and a crosshead screwdriver.



4. Lift the cover of the badge printer. Move the blue printer label guide to the right.



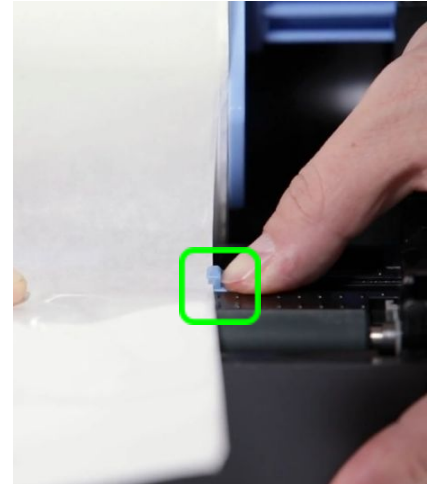
5. Remove the spindle and insert the label roll onto the spindle. Place the spindle back to its original location.



6. Pull the labels forward past the front edge of the box.



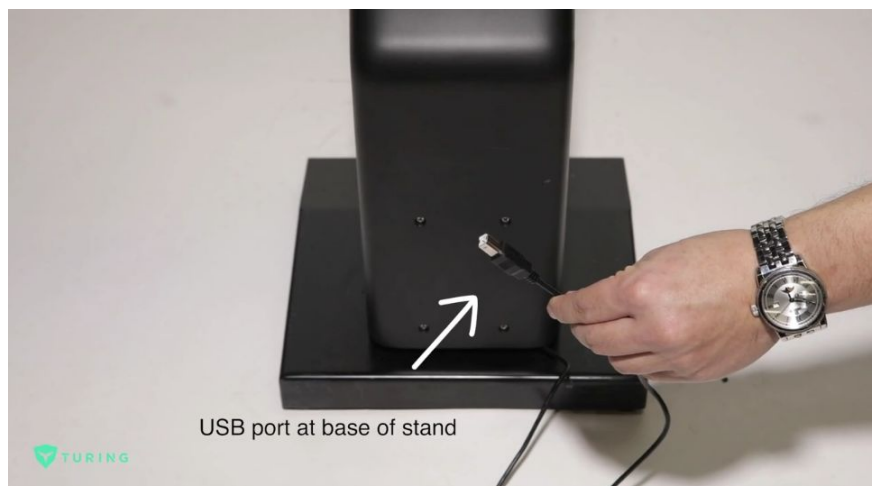
7. Adjusting the printer guides on both the right and left sides to fit the labels. Close the cover.



8. ***Make sure that the four screws from step 3 are tightened*** before placing the badge printer into the badge printer holder.



9. Locate the USB cable at the base of the stand



10. Connect the USB cable to the back of the badge printer.



11. Connect the power cable and flip the switch to the "on" position.



12. Place your bottle of hand sanitizer in the holder and you're good to go!

